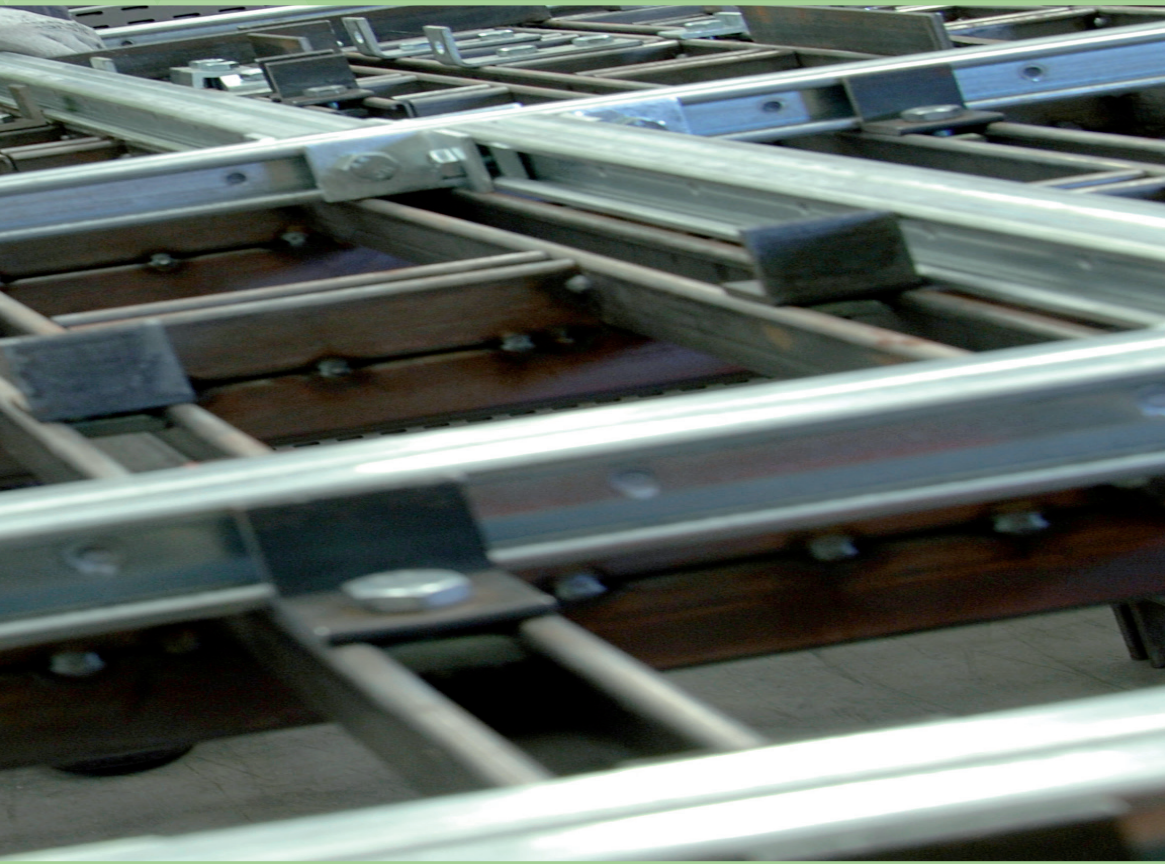




COST OF OWNERSHIP

Metal Framing



Atkore[™]
Unistrut

BS6946:1988 Specification for Product Marking

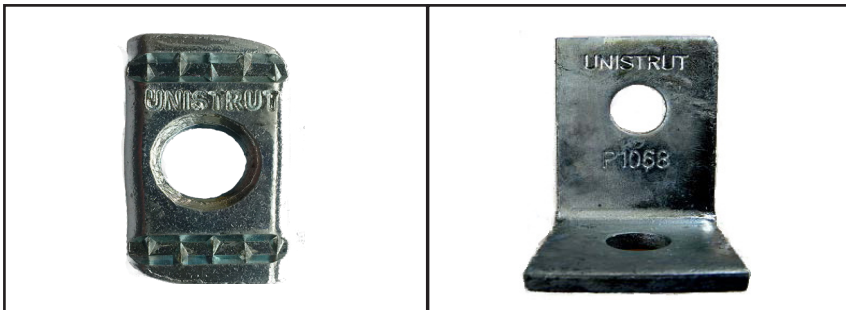
The standard requires that products are stamped with BS 6946:1988 and also the name of the manufacturer.

We at Unistrut® show that the standard is achieved by rolling the channel with the part number along with the full name of the Standard

BS6946:1988, and also our own UNISTRUT® branding. This is, as it should be, stamped into the Channel to ensure that you can clearly identify our product over the inferior product that is creeping into the market place.



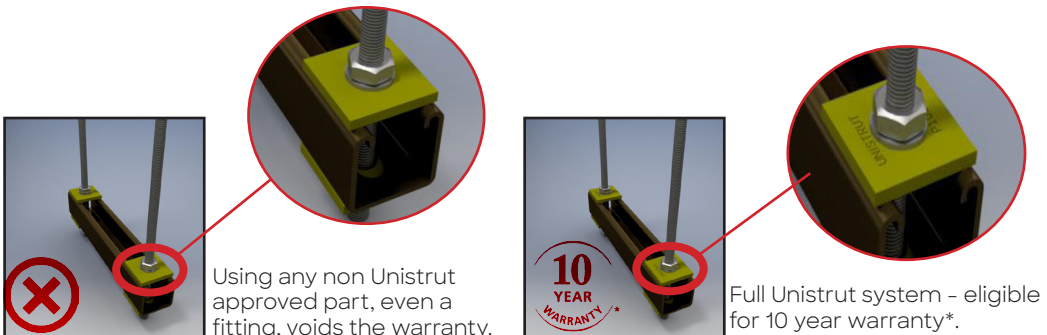
The engraving should also be clearly visible at all times, even when the product has undergone further finishing treatments i.e. Hot Dip Galvanised, Epoxy Coating. Contractors and distributors should be aware of cheap imported and non-standard products that have removable or no product marking at all, as this is not within the Standard.



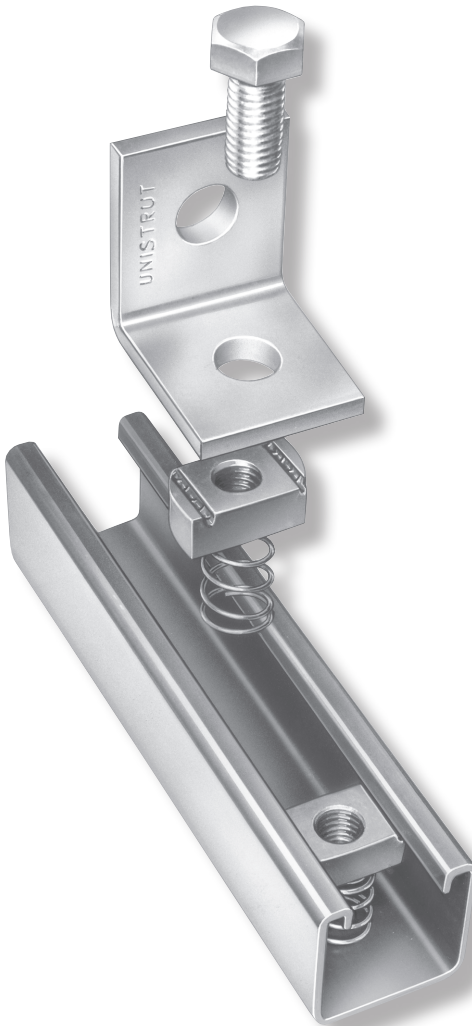
The support Channel System is normally the product that supports the majority of the building services in any installation. We know how important this product is to any installation, and how important it can be to have confidence in the pedigree of the material used, so we use a QBN (Quality Batch Number) stamped on every length of Atkore Unistrut that we manufacture. With this code we can trace the material used back to the original coil supplied and back to the mill certificate. This means you have peace of mind whenever you supply Atkore Unistrut product it meets the performance that we publish.



It clearly shows you that we take ownership of these products and that these products, when used in a total Unistrut metal framing solution qualify for our 10 year warranty*.



*Terms and conditions apply, contact Unistrut for details



LOOK FOR THESE FEATURES:

Make sure you use Unistrut® stamped channel nuts to ensure full system integrity. Large chamfer in the nut eases starting of bolt. Special shaped inturned edges and tapered, serrated grooves produce strong vice-like grip between channel and nut. Strut edges and nut's tapered grooves act as guides to provide positive alignment of connection.

- Nut teeth grip the Strut's inturned edges, tying the channel sides together in a "box" configuration for added strength.
- Longitudinal movement of nut is resisted as hardened teeth bite into the inturned edges.
- Spring allows precision placement anywhere along Strut length, then holds nut in position while connection is completed - the installer's "third hand".