

PHONE: 0121 580 6300  
EMAIL: [enquiries@atkore.com](mailto:enquiries@atkore.com)

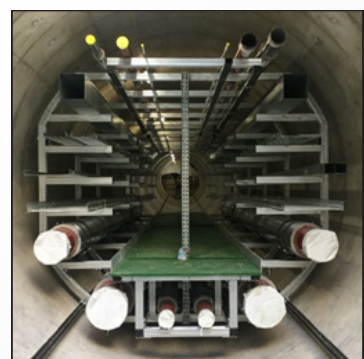
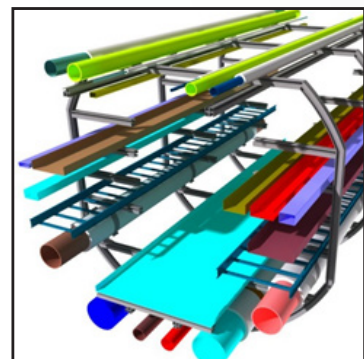
**Atkore**<sup>TM</sup>  
**Unistrut**

# DfMA & FEA

## DfMA

Here at Atkore Unistrut we are dedicated to delivering the correct solution for your project. From single support frames to complete modular schemes our DfMA solution will be engineered and assessed for purpose, delivered in the highest quality product on time and to program. DfMA can increase the quality compared to conventional methods through repeatability in production and quality control methods.

The biggest advantage is the reduction in installation time against program. Significant reduction in programme time required meets the rigorous demands of modern project timelines.



For more info visit [atkore.com/unistrut](https://atkore.com/unistrut) 

©2020 Atkore International, Inc. All rights reserved.

PHONE: 0121 580 6300

EMAIL: [enquiries@atkore.com](mailto:enquiries@atkore.com)

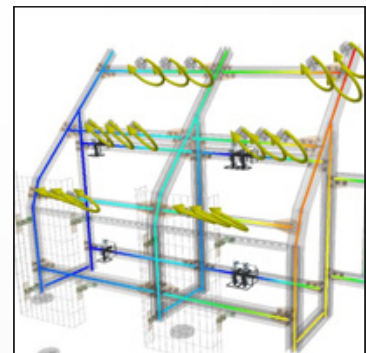
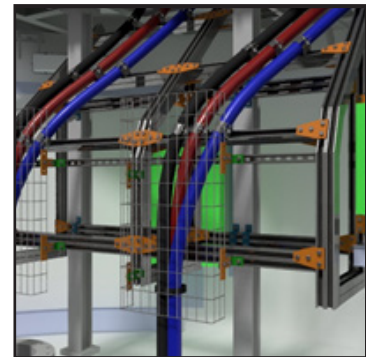
**Atkore**<sup>™</sup>  
**Unistrut**

# DfMA & FEA

## FEA

Our DfMA solutions all undergo Finite Element Analysis, this allows us, the manufacturer and you, the client to understand how our deliverable works in the real world. DfMA has been undertaken by Unistrut in the most demanding of projects from major Infrastructure projects through Healthcare to Nuclear where long design life considerations are paramount.

Whilst modelling, constraint and loading on the the designs in an as built / as installed state we can eliminate points of failure and ensure that the design is not over engineered but engineered correctly to allow ease of installation and confidence that the solution works through the warranted period and beyond.



For more info visit [atkore.com/unistrut](https://atkore.com/unistrut) 

©2020 Atkore International, Inc. All rights reserved.